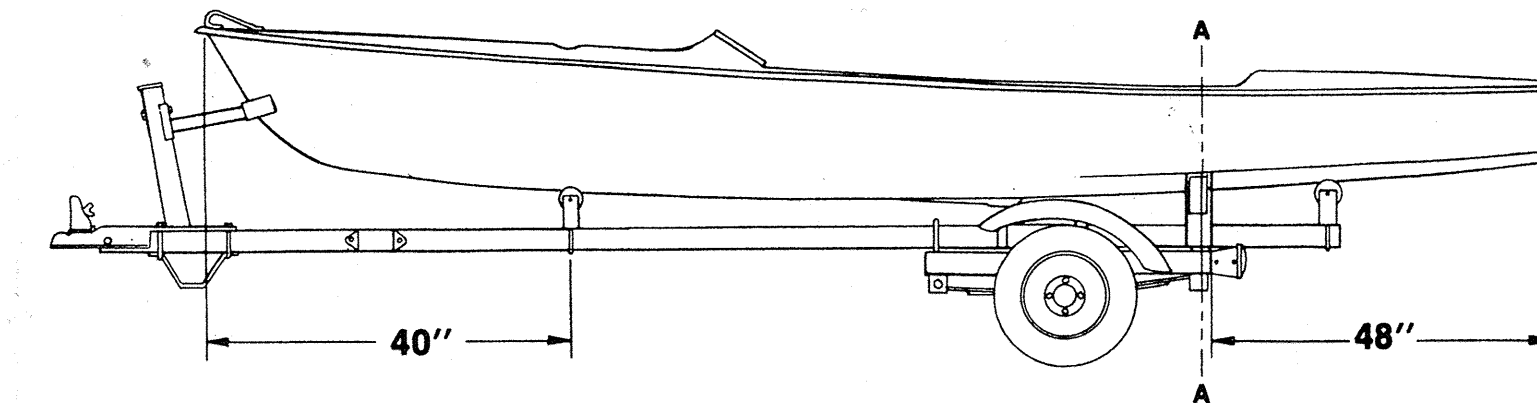


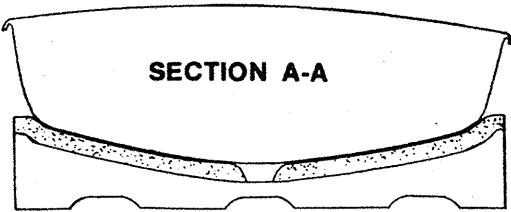
Force 5 Sailboat Trailering Instructions

WARNING

THIS IS A HIGH PERFORMANCE HULL THAT MUST BE TREATED WITH CARE. READ THESE IMPORTANT TRAILERING INSTRUCTIONS TO AVOID DAMAGE.



1. Damage will result if boat is trailered improperly.
2. Check your trailer carefully.
3. Never trail boat without first checking all lights, hitch seating on the ball and security of safety chain.
4. While AMF Alcort sport sailboats are designed and engineered for excellence in sailing performance, care must be taken to assure adequate hull support while trailering.
5. Be careful to avoid extreme pressure on hull from bunks or rollers.
6. Do not trail with cockpit load of any kind.



SPECIAL BUNK DESIGN
REQUIRED FOR FORCE 5
(SEE TEMPLATE)
DO NOT TRAILER YOUR
FORCE 5 WITHOUT ADEQUATE
FULL-WIDTH SUPPORT

AMF Alcort Sailboats, South Leonard Street, Waterbury, Conn. 06708 • Tel: 203/756-7091

AMF Incorporated 1982
Printed in U.S.A.

AFT SIDE OF BUNK TO BE LOCATED
4 FT. FORWARD FROM THE BOTTOM OF
THE TRANSOM MEASURED ON THE CENTERLINE.

TOP OF THE BUNK MUST BE PADDED TO PROTECT
THE BOAT BOTTOM FROM DAMAGE WHEN TRAILERING.

CUT BOTTOM OF BUNK TO CLEAR
TRAILER FRAME, LIGHTS, ETC.

TRAILER BUNK TEMPLATE

SHOWN HERE IS HALF BUNK.
FOR OTHER HALF, REVERSE PATTERN.
PART IS SYMMETRICAL ABOUT ϕ (CENTER LINE)

TYPICAL MATERIAL
1 1/2" EXT. FIR PLYWOOD
(2 PC. 3/4" FASTENED TOGETHER)
TOTAL LENGTH 60"